

B1 INSTALLATION DRAWING

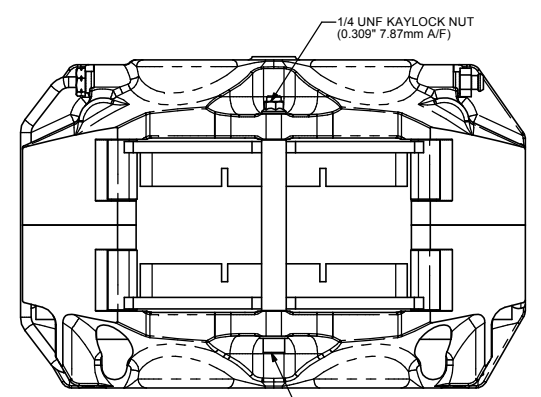
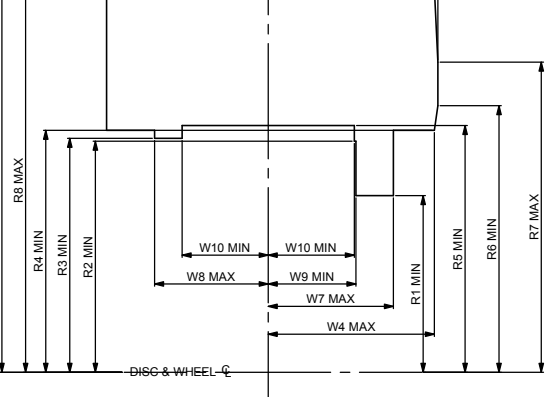
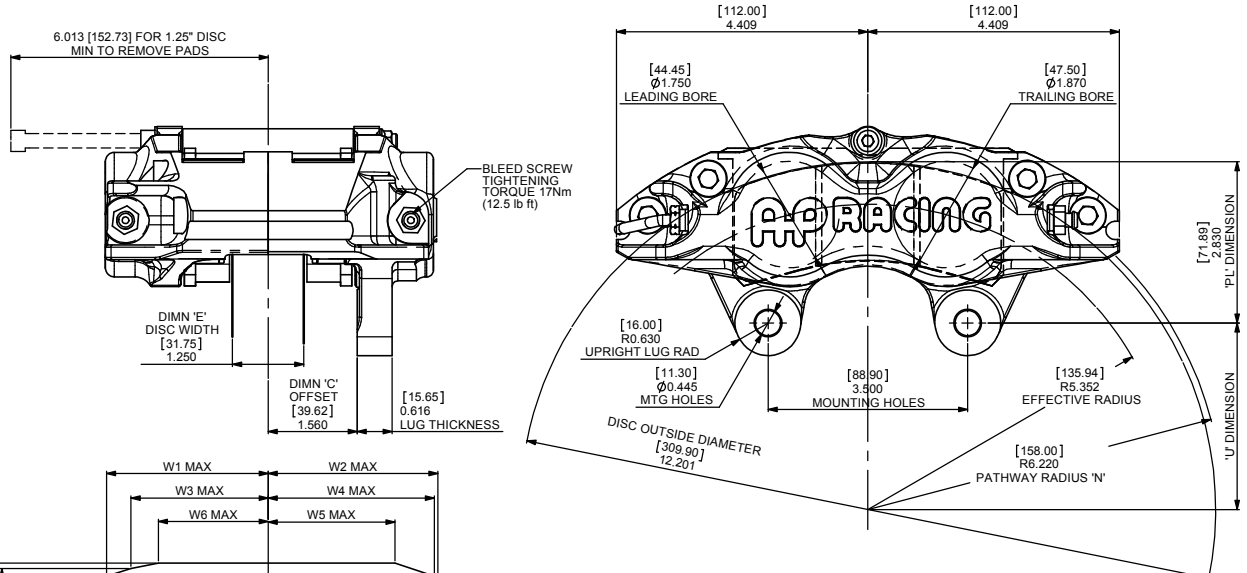
IF THIS DOCUMENT IS PRINTED IN HARDCOPY, IT IS FOR INFORMATION USE ONLY AND THEREFORE IS NOT SUBJECT TO UPDATING CONTROLS. ALWAYS REFER TO SOLIDWORKS VIEWER FOR LATEST ISSUE



THIS DRAWING IS CONFIDENTIAL AND IS SUPPLIED ON THE EXPRESS CONDITION THAT IT SHALL NOT BE LOANED OR COPIED OR DISCLOSED TO ANY OTHER PERSON OR USED FOR ANY OTHER PURPOSE WITHOUT THE WRITTEN CONSENT OF AP RACING LTD.

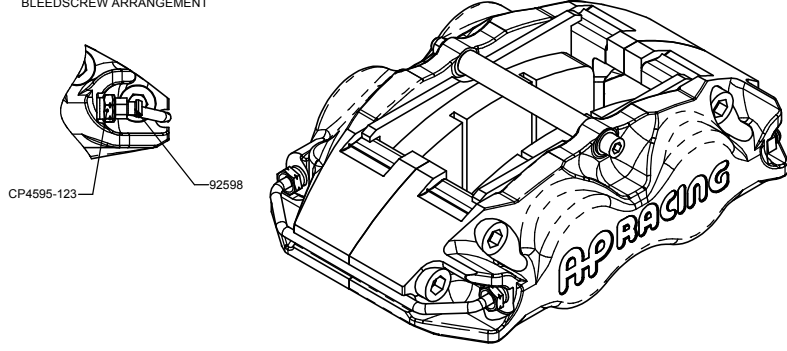


AP Racing
Wheler Road
Coventry
CV3 4LB
Tel: +44 024 7683 9595
Fax: +44 024 7683 9559
e-mail: sales@apracing.co.uk
Web site: HTTP://www.apracing.com



PAD RETAINER BOLTS SHOULD BE TIGHTENED TO A TORQUE OF 11lbs ft (14.9Nm) MAX

ALTERNATIVE TWO PIECE BLEEDSCREW ARRANGEMENT



GENERAL DESCRIPTION
THIS IS A LOW COST 4 PISTON DIFFERENTIAL BORE CALIPER, DESIGNED TO OPERATE ON A VENTILATED IRON DISC OF ϕ 11.50" (292.1mm) TO ϕ 12.2" (309.9mm). ALL CALIPERS ARE MANUFACTURED WITH BLEED SCREW AND PIPE ASSEMBLY PROTECTION. STAINLESS STEEL PAD ABUTMENT WEAR PLATES AND HIGH TEMPERATURE LOW DRAG SEALS ARE FITTED AS STANDARD. SEALS ARE 'SEAL IN BORE' TYPE. RECIRCULATION KITS ARE AVAILABLE WITH AP RACING PATENTED DESIGN.

TYPICAL APPLICATION
LATE MODEL FRONT.

TECHNICAL INFORMATION

TOTAL PISTON AREA - 10.33 in² (66.66mm²)
PISTON MATERIAL - STAINLESS STEEL (STANDARD)
BODY MATERIAL - ALUMINIUM ALLOY
HYDRAULIC CONNECTIONS - 3/8" x 24 UNF

NOTES - SHOULD THE PISTON BE INADVERTENTLY REMOVED, THEY SHOULD BE WIPED CLEAN AND BE SMEARED WITH AP RACING BRAKE FLUID BEFORE REPLACEMENT.

IMPORTANT INFORMATION

DISC AND CALIPER MOUNTING TOLERANCES TO BE SUCH THAT THE DISC IS CENTRAL TO THE CALIPER TO WITHIN $\pm 0.019"$ (0.50mm). THE CLEARANCE FROM DISC DIAMETER TO PATHWAY SHOULD BE 0.098" (2.5mm) NOM.

KEY TO DIMENSIONS

- DIMENSION 'PL' - TOP OF PAD MATERIAL TO MOUNTING BOSS FACE WITH PAD HANGING DOWN ON THE RETAINING PINS.
- DIMENSION 'C' - DISC CENTRE LINE TO MOUNTING STUD CENTRE LINE.
- DIMENSION 'U' - WHEEL CENTRE TO CALIPER MOUNTING BOSS FACE, (DISC DIAMETER / 2) - 'PL' DIMENSION.
- DIMENSION 'H' - MOUNTING HOLE DIAMETER.
- RADIUS 'N' - RADIUS OF DISC PATHWAY.
- EFFECTIVE RAD. - DISTANCE FROM WHEEL CENTRE LINE TO NOMINAL PISTON CENTRE LINE.

AP RACING TECHNICAL SECTION WILL BE PLEASED TO ADVISE ON THE MOST SUITABLE EQUIPMENT FOR ANY APPLICATION.

REPLACEMENT SEAL KIT
SEAL KIT (HIGH TEMP) CP4518-LM

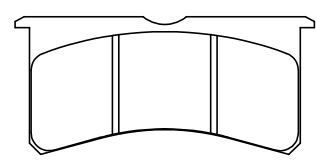
CALIPER ASSY FAMILY No.	STROKE No.					DISC ϕ	DISC WIDTH DIMN 'E'	DIMN 'C'	RECIRCULATING KIT NUMBERS	REMARKS & APPLICATIONS
	RHT	LHT	RHL	LHL						
CP8250-	2	3	4	5		12.2" (309.9)	1.25" (31.75)	1.56" (39.62)	CP7751-32	

Radial Profile Chart

Disc	R1	R2	R3	R4	R5	R6	R7	R8	R9	R10
ϕ 12.2" (309.9)	3.098 (78.70)	4.053 (102.94)	4.102 (104.19)	4.240 (107.69)	4.326 (109.89)	4.674 (118.71)	5.440 (138.18)	6.733 (171.03)	6.889 (174.48)	6.964 (176.89)
Eff Rad	W1	W2	W3	W4	W5	W6	W7	W8	W9	W10
5.282 (133.4)	2.835 (72.00)	2.976 (75.60)	2.405 (61.08)	2.917 (74.08)	2.224 (56.50)	1.925 (48.90)	2.196 (55.77)	1.994 (50.65)	1.540 (39.12)	1.510 (38.35)
Disc	R1	R2	R3	R4	R5	R6	R7	R8	R9	R10
ϕ 11.75" (298.45)	2.902 (73.70)	3.823 (97.11)	3.885 (98.68)	4.023 (102.19)	4.102 (104.18)	4.449 (113.00)	5.215 (132.46)	6.544 (166.21)	6.685 (169.81)	6.745 (171.33)
Eff Rad	W1	W2	W3	W4	W5	W6	W7	W8	W9	W10
5.035 (127.88)	2.835 (72.00)	2.976 (75.60)	2.405 (61.08)	2.917 (74.08)	2.224 (56.50)	1.925 (48.90)	2.196 (55.77)	1.994 (50.65)	1.540 (39.12)	1.510 (38.35)

PAD INFORMATION

POLYMATRIX PADS TYPE 7420
HAWK PADS TYPE HB-521



PAD THICKNESS - 0.795" (20.20mm)
PAD AREA - 7.854 in² (50.67cm²)
PAD VOLUME - 6.244 in³ (102.35cm³)

REV	Alterations			
	Date & No.	Particulars	Zone	Initials
1	01/11/2006 B4585	FIRST ISSUE		CDA
2	07/12/2006 B4585	0.81" DISC THICKNESS VERSIONS REMOVED. SHEET 2 SPARES LIST ADDED.		CDA
3	09/01/2007 B4685	SPARES LIST UPDATED.		CDA

SCALE 2:1 SHEET 2 OF 2

DRAWN Chris Arrowsmith

APPROVED

DERIVED FROM

TITLE
4 POT, LUG MOUNTED CALIPER

DRG NO. CP8250-1CD

B1

INSTALLATION DRAWING

IF THIS DOCUMENT IS PRINTED IN HARDCOPY IT IS FOR INFORMATION USE ONLY AND THEREFORE IS NOT SUBJECT TO UPDATING CONTROLS. ALWAYS REFER TO SOLIDWORKS VIEWER FOR LATEST ISSUE



FIRST ANGLE PROJECTION

THIS DRAWING IS CONFIDENTIAL AND IS SUPPLIED ON THE EXPRESS CONDITION THAT IT SHALL NOT BE LOANED OR COPIED OR DISCLOSED TO ANY OTHER PERSON OR USED FOR ANY OTHER PURPOSE WITHOUT THE WRITTEN CONSENT OF AP RACING LTD.



AP Racing
Wheler Road
Coventry
CV3 4LB

Tel: +44 024 7663 9595
Fax: +44 024 7663 9559

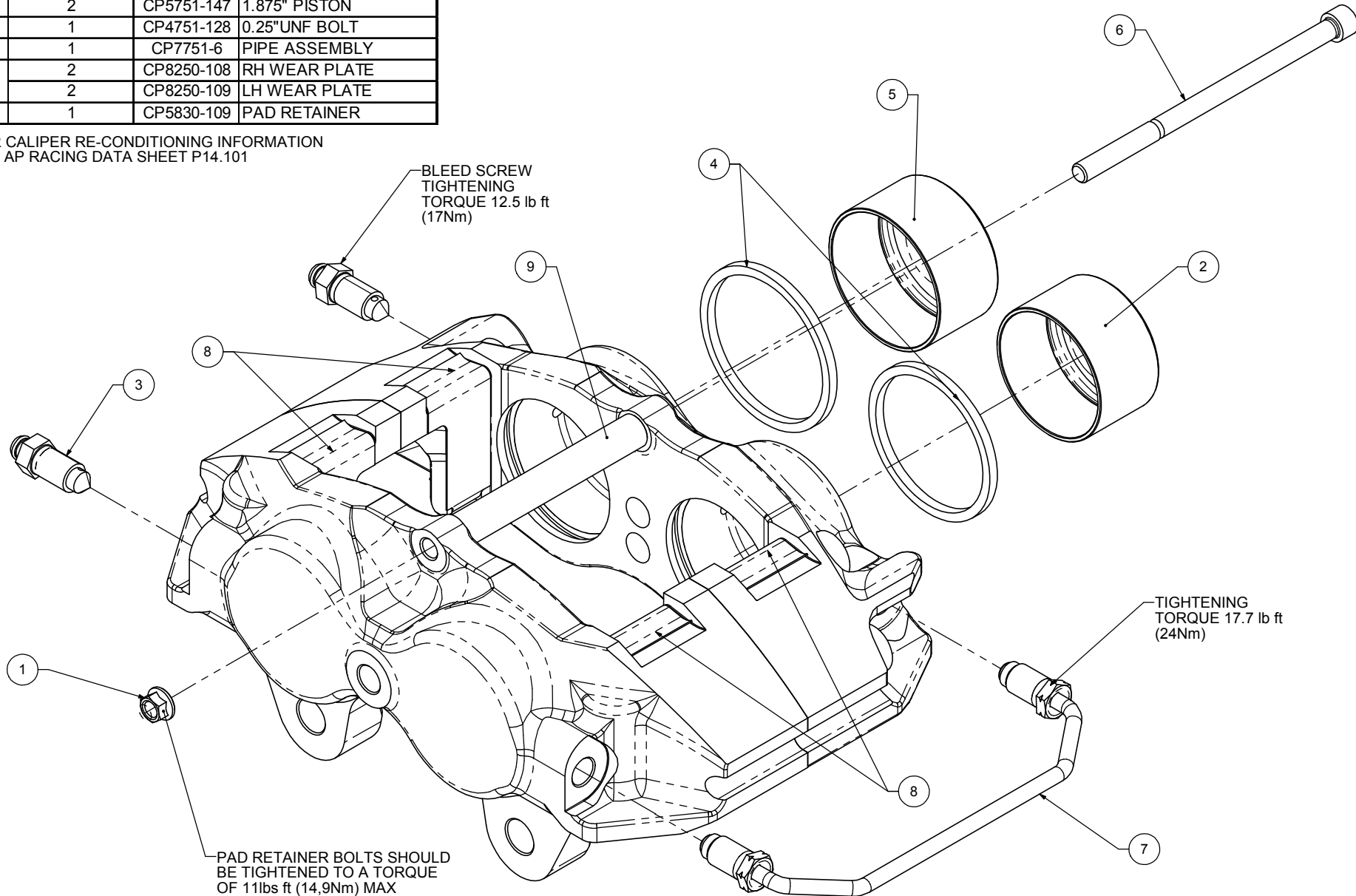
e-mail: sales@apracings.co.uk
Web site: HTTP://www.apracings.com

© AP Racing Ltd. 2005

SPARE PARTS LIST

REF	QTY / CALIPER	PART No.	DESCRIPTION
1	1	CP3819-108	0.25" UNF NUT
2	2	CP5751-145	1.750" PISTON
3	2	CP3720-182	BLEED SCREWS
4	1	CP4518-LM	HIGH TEMP SEAL KIT
5	2	CP5751-147	1.875" PISTON
6	1	CP4751-128	0.25"UNF BOLT
7	1	CP7751-6	PIPE ASSEMBLY
8	2	CP8250-108	RH WEAR PLATE
	2	CP8250-109	LH WEAR PLATE
9	1	CP5830-109	PAD RETAINER

FOR CALIPER RE-CONDITIONING INFORMATION SEE AP RACING DATA SHEET P14.101



BLEED SCREW TIGHTENING TORQUE 12.5 lb ft (17Nm)

TIGHTENING TORQUE 17.7 lb ft (24Nm)

PAD RETAINER BOLTS SHOULD BE TIGHTENED TO A TORQUE OF 11lbs ft (14,9Nm) MAX

Issue No.	Alterations		
	Date & No.	Particulars	Zone / Initials
-	-	SEE SHEET 1 FOR ISSUE INFORMATION.	-

SCALE 2:1	SHEET 2 OF 2
DRAWN	Chris Arrowsmith
APPROVED	
DERIVED FROM	
TITLE	
DRG NO.	CP8250-1CD